



# OVY Camp and Event Center

5360 La Honda Road, San Gregorio, CA 94074 • (650) 747-0321 • [www.ovycamp.org](http://www.ovycamp.org) • [info@ovycamp.org](mailto:info@ovycamp.org)

## Facilities Guide

Please refer to this Facilities Guide for all questions regarding OVY Camp and Event Center's beautiful venue. If your question is not answered by this guide, please email or call the OVY Camp and Event Center office. We are happy to answer any questions you may have. Remember, all rental fees help OVY Camp bring youth to summer camp that otherwise wouldn't have the opportunity! Thank you!

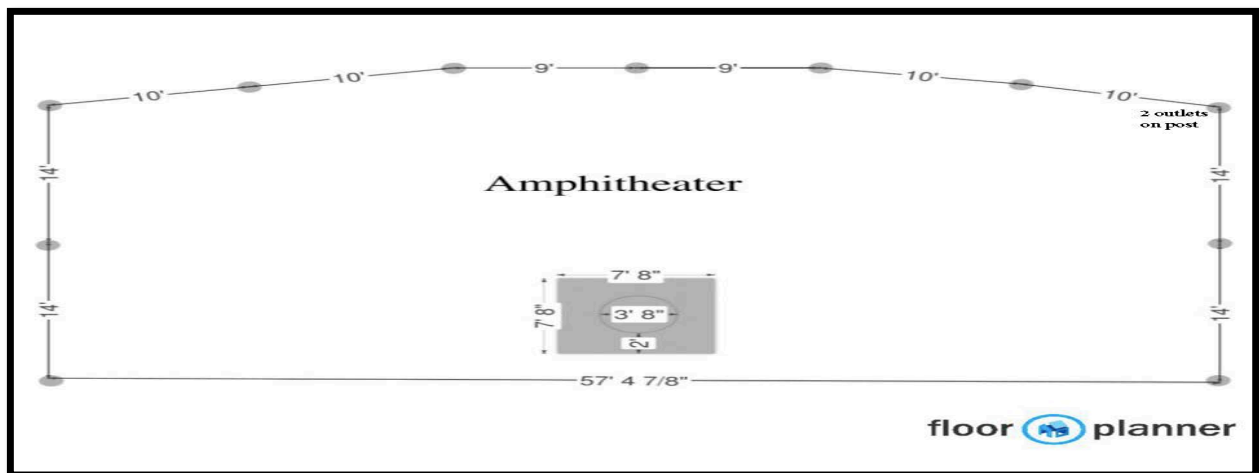
### Amphitheater

**Seating Capacity:** Seats about 180 people (90 on each side), plus additional room for benches in front.

**Electricity:** One 15-amp outlet (2 plugs). Flood lights illuminate the space very well.

**Dimensions:** The beams are 12'3" tall and span 114' end to end. Concrete slab around fire pit is 7'8" x 7'8". Fire pit has diameter of 3'8".

**Miscellaneous:** Firewood at amphitheater available for a fee.





# OVY Camp and Event Center

5360 La Honda Road, San Gregorio, CA 94074 • (650) 747-0321 • [www.ovycamp.org](http://www.ovycamp.org) • [info@ovycamp.org](mailto:info@ovycamp.org)

## Willow Glen Lodge

**Capacity:** 8 rooms, 3 twin beds in each (1 bunk bed, one single). 24 beds total.

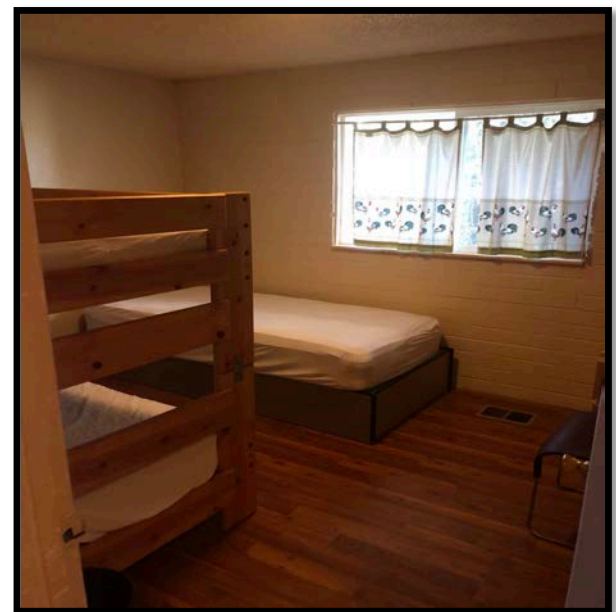
**Electricity:** One 15-amp outlet (2 plugs) in each room.

**Bathrooms:** Hot showers (1 in women's, 2 in men's). Outlets in bathrooms.

**Kitchen:** Fully stocked with plates, bowls, silverware, cups for up to 24 people. 12-cup coffee maker. Refrigerator and freezer. Oven. Stove. Microwave.

**Heating:** Central heating & Fireplace. Firewood available for a fee.

**Miscellaneous:** Deck with patio furniture.





# OVY Camp and Event Center

5360 La Honda Road, San Gregorio, CA 94074 • (650) 747-0321 • [www.ovycamp.org](http://www.ovycamp.org) • [info@ovycamp.org](mailto:info@ovycamp.org)

## Cabin Village

**Capacity:** 12 cabins with about 9 single beds in each cabin (4 bunk beds and 1 single). Total of 105 beds between 12 cabins. List of the cabin names, starting with the cabin closest to the Amphitheater, going counter clockwise from there: Nettle, Coyote, Salamander, Banana Slug, Buckeye, Shaggy Mane, Redwood, Mapache, Tidepool, Grizzly Bear (6 beds, not 9 beds), Owl, and Thimbleberry.

**Tent Camping:** Tent camping allowed only in the grassy area of the Cabin Village.

**Electricity:** Each cabin has a pull string light in the center. One 15-amp outlet (2 plugs) at Bathrooms. No outlets in Cabins.

**Bathroom Complex:** In center of Cabin Area, directly outside of cabins. 8 flushing toilets. 2 hand-washing sinks. No showers. One 15-amp outlet (2 plugs) at Bathrooms.

**Heating:** No heat source in cabins. They are cozy and do not get very cold at night.

**Miscellaneous:** Firewood at amphitheater available for a fee.





# OVY Camp and Event Center

5360 La Honda Road, San Gregorio, CA 94074 • (650) 747-0321 • [www.ovycamp.org](http://www.ovycamp.org) • [info@ovycamp.org](mailto:info@ovycamp.org)

## *Scheid Hall (aka Main Hall)*

**Capacity:** 200 people maximum.

**Dimensions of Scheid Hall:** 63'L x 32'W x 9'6"H (beams with lights). Fireplace is 8'5"W.

**Electricity:** 15-amp outlets (2 plugs) at the base of each beam (8 total). Holiday lights on beams are permanent. Adding supplemental lighting is encouraged inside Scheid Hall.

**Seating:** 40 tables (30" x 96"). 54 benches (96" long). About 4 people fit per bench. Floor plan up to you! We also have 3 high chairs.

**Heating:** Central heating & Fireplace.

**Wi-Fi – Network:** OVY Camp *Password:* available upon request

**Miscellaneous:** Firewood available for a fee. All other items such as linens, decorations, table settings, chairs, etc. must be rented through an event supply company.





# OVY Camp and Event Center

5360 La Honda Road, San Gregorio, CA 94074 • (650) 747-0321 • [www.ovycamp.org](http://www.ovycamp.org) • [info@ovycamp.org](mailto:info@ovycamp.org)





# OVY Camp and Event Center

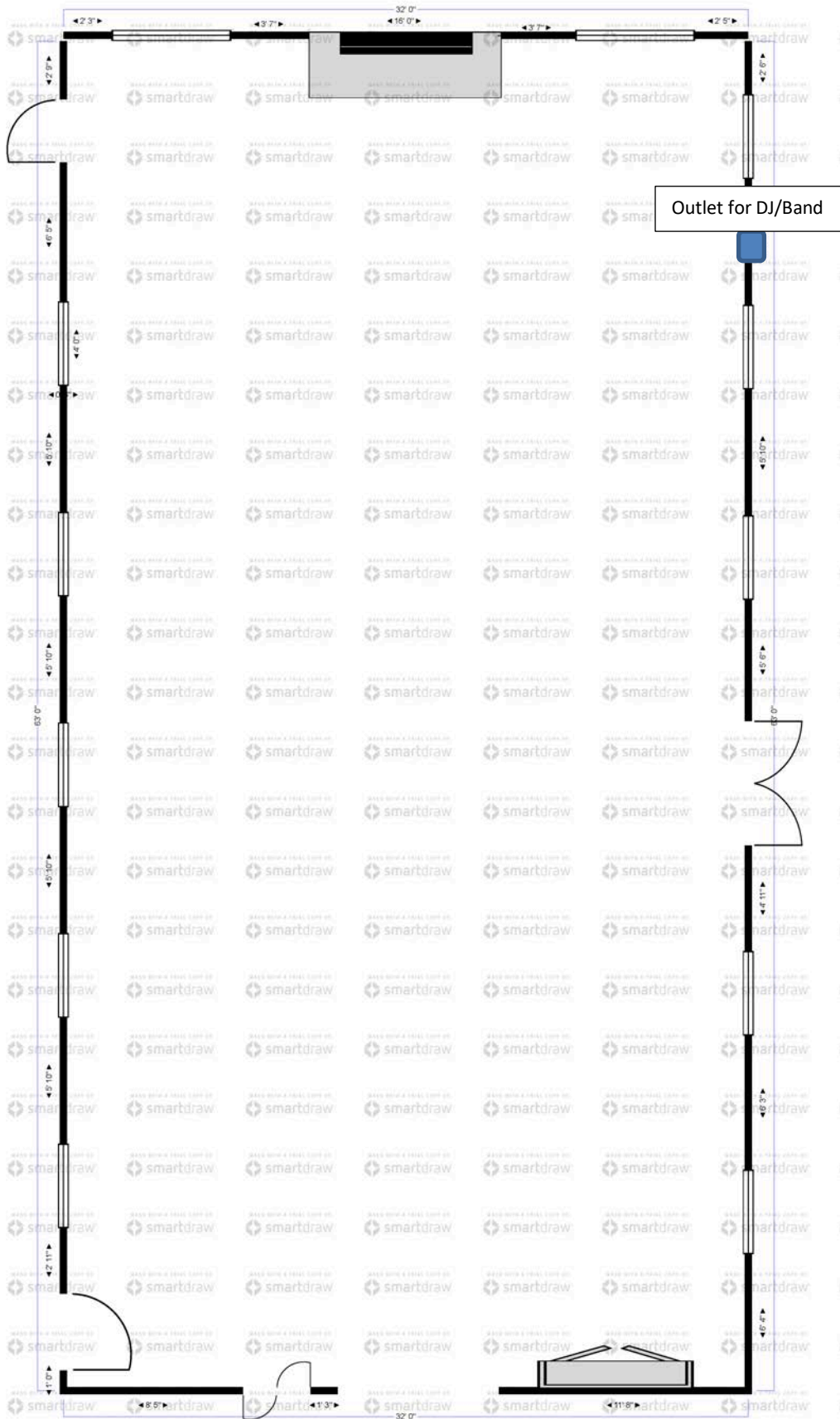
5360 La Honda Road, San Gregorio, CA 94074 • (650) 747-0321 • [www.ovycamp.org](http://www.ovycamp.org) • [info@ovycamp.org](mailto:info@ovycamp.org)





# OVY Camp and Event Center

5360 La Honda Road, San Gregorio, CA 94074 • (650) 747-0321 • [www.ovycamp.org](http://www.ovycamp.org) • [info@ovycamp.org](mailto:info@ovycamp.org)



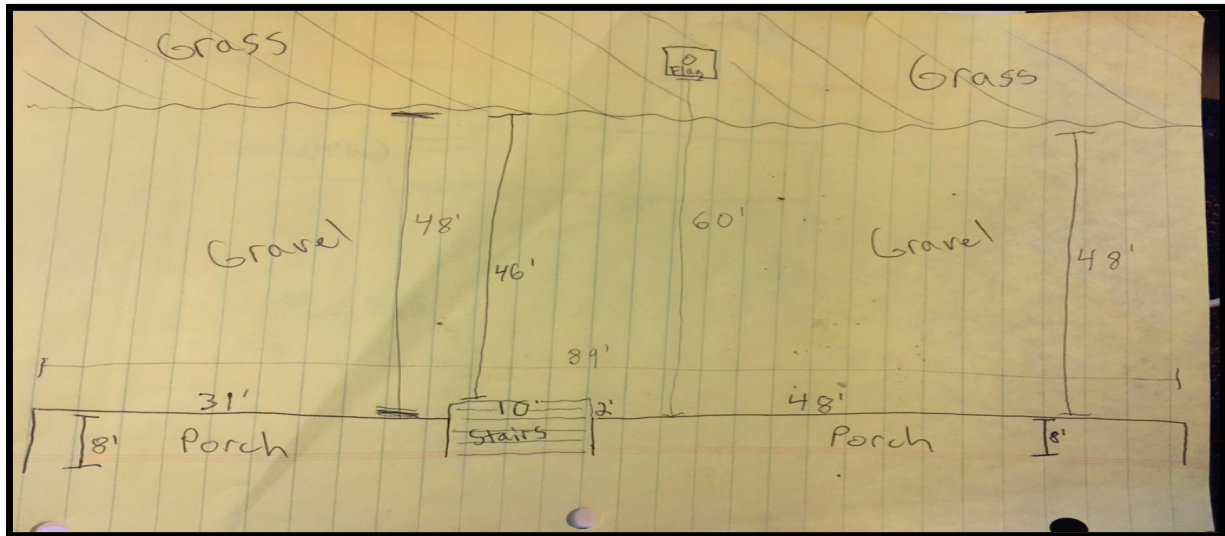


# OVY Camp and Event Center

5360 La Honda Road, San Gregorio, CA 94074 • (650) 747-0321 • [www.ovycamp.org](http://www.ovycamp.org) • [info@ovycamp.org](mailto:info@ovycamp.org)

**Scheid Hall Bathrooms:** Hot showers (0 in women's, 4 stalls in men's). Toilets (2 in women's, 2 in men's, 3 urinals in men's). Sinks (4 in men's, 2 in women's). No mirrors.

## Scheid Hall Back Patio and Front Porch Area:



## Scheid Hall Back Patio and Front Porch Area:

**Capacity:** Two 7-piece patio furniture sets in Back Patio.

**Electricity:** Several 15-amp outlets throughout Front Porch.

**Miscellaneous:** 2 portable fire pits. 2 standalone Ash Trays. Ample Recycling Bins. Ample Trash Cans with liners. Ping Pong Table and Foosball Table.





# OVY Camp and Event Center

5360 La Honda Road, San Gregorio, CA 94074 • (650) 747-0321 • [www.ovycamp.org](http://www.ovycamp.org) • [info@ovycamp.org](mailto:info@ovycamp.org)

## Scheid Hall Kitchen:

**Appliances:** Convection Oven, 2 conventional ovens, 6-burner stove, large griddle, reach-in refrigerator, walk-in refrigerator, commercial freezer, commercial dishwasher, microwave, toaster, and 1 40-cup percolator and 1 100-cup coffee makers.

**Cookware:** No large cutting knives, but we have nearly everything else you could want in a kitchen!

**Table Settings:** Can be rented for a fee.





# OVY Camp and Event Center

5360 La Honda Road, San Gregorio, CA 94074 • (650) 747-0321 • [www.ovycamp.org](http://www.ovycamp.org) • [info@ovycamp.org](mailto:info@ovycamp.org)

## Redwood Grove

**Capacity:** 200 people maximum. There are two easy, comfortable, and gorgeous configurations to arrange the wedding ceremony inside the Redwood Grove. Up to 6 benches can be set up in front of platform. As many benches as necessary if not using raised-platform area.

**Electricity:** 15-amp outlets (2 plugs) at base of tree next to raised-platform.

**Raised Platform:** 8' x 8'.





# OVY Camp and Event Center

5360 La Honda Road, San Gregorio, CA 94074 • (650) 747-0321 • [www.ovycamp.org](http://www.ovycamp.org) • [info@ovycamp.org](mailto:info@ovycamp.org)

## Pool & Pool Locker Rooms

**Rate:** Pool is available to rent by the hour for \$175/hr. This fee includes a lifeguard.

**Capacity:** 72 people maximum.

**Depth:** 3'– 9'. Diving off far wall of deep end only.

**Bathrooms:** 2 toilets in women's, 1 toilet and 1 urinal in men's.

**Showers:** Common shower room with 5 showerheads in each men's and women's. Hot showers.

**Miscellaneous:** Pool sessions must be at least 2 hours and no more than 3-hours at a time. A 1-hour break is required after every 3-hour pool session. There is a strict 72 person limit within the pool gate, not just in the water. No glass allowed or A/V equipment that needs to be plugged-in is allowed within pool gate.





# OVY Camp and Event Center

5360 La Honda Road, San Gregorio, CA 94074 • (650) 747-0321 • [www.ovycamp.org](http://www.ovycamp.org) • [info@ovycamp.org](mailto:info@ovycamp.org)

## Parking

There is ample parking for up to 200 guests at OVY Camp. Carpooling is strongly recommended. Some parking fields may be off limits if conditions cause them to be undrivable.

Vehicles or vehicle/trailer combinations with a wheelbase over 102 inches in width and a length of 40 feet or higher are prohibited. In addition, Class A and Class C RV's and Class A and Class C Shuttle Buses/Coach Buses are strictly prohibited. A seven hundred fifty dollar (\$750) fine will be charged if any Class A and/or Class C RV's and/or Class A and/or Class C Shuttle Buses/Coach Buses enter OVY Camp.

## Bridge

Again, vehicles or vehicle/trailer combinations with a wheelbase over 102 inches in width and a length of 40 feet or higher are prohibited. In addition, Class A and Class C RV's and Class A and Class C Shuttle Buses/Coach Buses are strictly prohibited. A seven hundred fifty dollar (\$750) fine will be charged if any Class A and/or Class C RV's and/or Class A and/or Class C Shuttle Buses/Coach Buses enter OVY Camp.

**Dimensions of Bridge:** 102" wide

**Weight Limit of Bridge:** 30 tons

